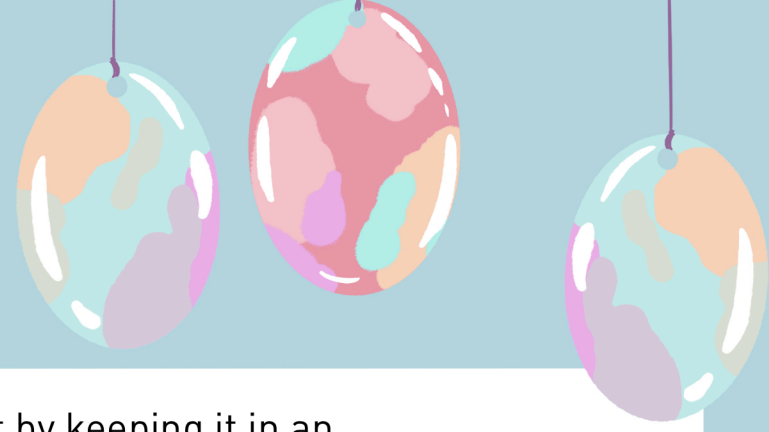


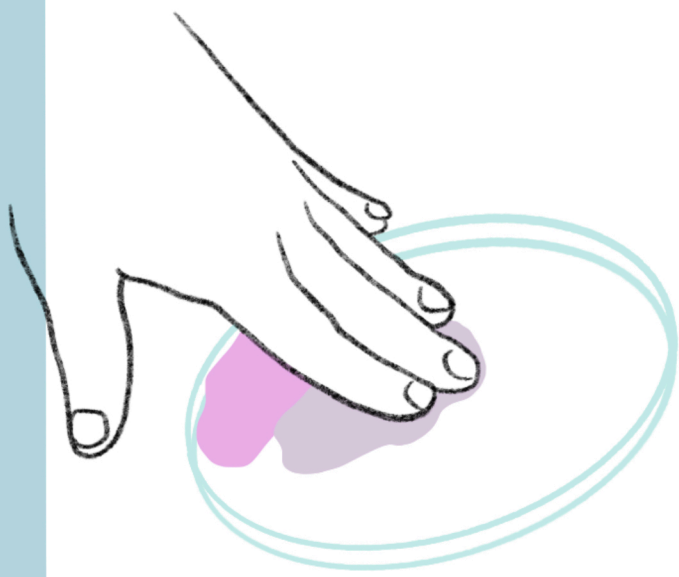
Slime Sculptures and Suncatchers



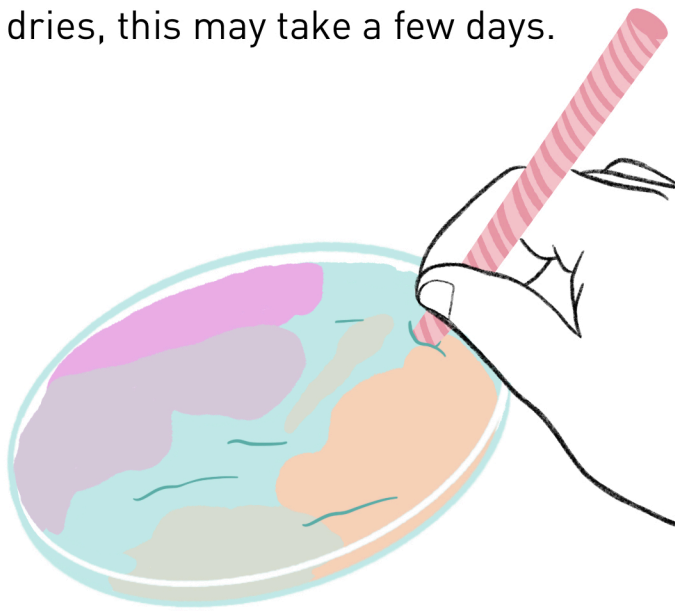
Now that you have made your slime you can either save it by keeping it in an airtight container or ziplock bag, or you can create amazing artworks with it.

Suncatchers METHOD

Step 1: Flatten out your slime onto a non porous surface, like a plastic container lid. Try using different colours.



Step 2: Use a straw to pierce a hole near the top so that you can hang it when it is dry. Put it in a sunny place to dry out fully (still on the lid). It will start to curl up at the edges as it dries, this may take a few days.

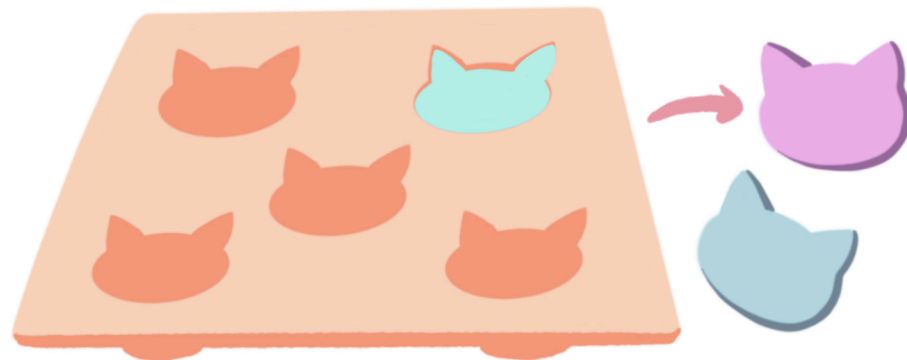


Step 3: Once it is pretty dry, you can peel it off the plastic lid and hang it near a window or on a Christmas tree!



Slime Shapes METHOD

Press some slime into an ice tray/chocolate mold/cookie cutter that has some fun shapes, and leave to dry. When it is dry you will have some colourful toys.



The water is evaporating from the slime, leaving it dry and brittle, sort of like plastic.

Slime Sculptures METHOD

Step 1: Flatten out your slime onto a non porous surface or drape it over an upturned bowl.



Step 2: As it dries, try moving it from time to time. As the mixture dries you can start to twist it into shapes.



Step 3: Once it is completely dry you should have a slightly transparent sculpture that you can put on display.

